

VIBRA-series: Online monitoring

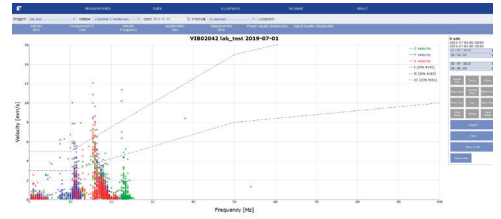


Fig. 1: velocity/frequency graph with threshold lines

vibrmonitoring.com

For the online display and management of your vibration measuring equipment, Profound has the vibrmonitoring.com service. vibrmonitoring.com is a web application that allows you to easily present your measurement data and if desired, it is possible to let your customers view the relevant projects in real time. Your VIBRA system can be set up very easily with the PC Software to stream data to vibrmonitoring.com

- Graphical online presentation of vibration measurement data of your VIBRA systems
- Graphical online display of velocity versus frequency incl. DIN Threshold lines
- Online management of your VIBRA systems and vibration measurement projects
- Integration with Google Maps for a clear project overview
- Settings of your VIBRA systems can be changed via the server
- Online access to status information of your VIBRA such as battery level, GPRS signal strength
- Export possibilities of measurement data numerically and graphically for reporting in various file formats
- 3 user levels: Supervisor, User, Guest with matching rights and insight into data at all levels
- Automatic backup of your data

Fig. 2: Change Remote Settings

Fig. 3: Change DIN Threshold lines

Project name	location	created
Stationsweg 12		2015-01-20
Stoelwijk		2015-01-06
Wadderveen Limaweg 17		2015-01-19
demo		2015-03-10

VIBRA	status	project
VIB00001	Disabled	
VIB00099	Disabled	
VIB01000	Enabled	
VIB01001	Enabled	
VIB01066	Enabled	

VIBRA	state	location	battery	memory use (%)	signal	signal (dBm)	peak type	code	days	start date	last date	last time
VIB01000	(Transferred)	profound	8.67	12%	100%	-82 dBm	vk45	888	36	2019-06-20	2019-06-27	11:28:45
VIB01001	(Transferred)	0000	9.90	27%	6%	-87 dBm	vk42	888	5	2019-02-15	2019-02-15	10:09:20
VIB01028	(Transferred)		9.83	33%	41%	-85 dBm	vk45	888	4	2019-04-28	2019-06-28	11:49:30
VIB02062	(Transferred)		4.24	81%	18%	-85 dBm	vk42	DIN	12	2019-06-14	2019-06-28	11:54:50

FOR FURTHER INFORMATION